

Expansion tank bracket
ZL-4022F

Contact
Email: sales2@bzvalve.com



DESCRIPTION



Used to connect the bracket component of the expansion tank, and the sandbladder is placed in white zinc.
 Depend on The pressure gauge, safety valve, exhaust valve, and anti -inverse component composition, the pressure gauge can be straightforward Looking at the pressure in the expansion tank, the safety valve can provide the super pressure of the expansion tank Safety guarantees, exhaust valves are used to discharge the gas generated in the expansion tank.
 Installation location: Usually installed at the water supply end and hot water tank of the supply pipeline The cold water entrance.
 Main functions: mainly used for expansion tanks and water back or hot water tanks cold water The connection and fixing of the end pipeline.

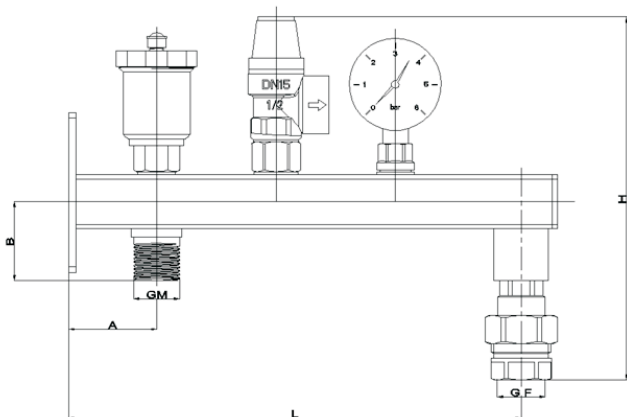
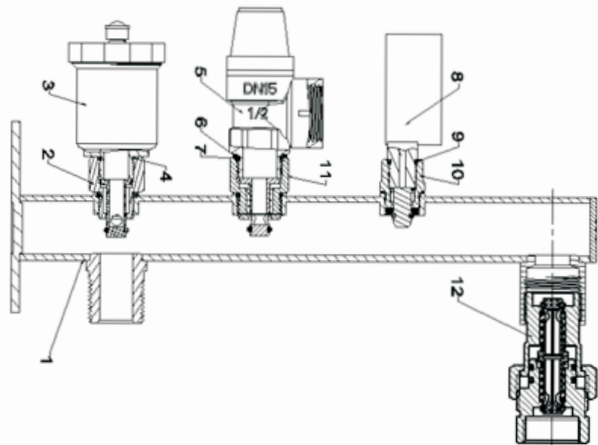
The scope of work

Applicable medium: water
 Work pressure: $\leq 0.3\text{MPa}$

Work temperature: $0 \sim 100\text{ }^\circ\text{C}$
 Thread Standard: ISO228-1

Material

No.	Components	Material
1	Expansion tank bracket	A3
2	check valve Air	Brass
3	Vent	Brass
4	O-ring	EPDM
5	Safety valve (3bar)	Brass
6	O-ring	EPDM
7	Gasket	PTFE
8	Pressure gauge (0-6bar)	Brass
9	O-ring	EPDM
10	Check vakve	Brass
11	Check vakve	Brass
12	Check vakve	Brass



Size

A	B	L	H	GM	GF
48.5	43.5	250	200	G3/4" M	G3/4" F